

CATALOGO  
APPLICAZIONI  
auto  
camion  
trattore

2010





### POWER PROFI

- / Maggiore potenza d'avviamento
- / Coperchio con degassing centralizzato
- / Indicatore dello stato di carica
- / Manutenzione azzerata grazie all'impiego della tecnologia Piombo-Calcio
- / Bassa autoscarica
- / Alta resistenza alla corrosione

### PROFI

- / Gamma dedicata a circolante asiatico e vetture europee di nicchia
- / Avviamenti sicuri in ogni condizione



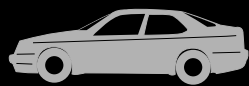
### LKW PROFİ Heavy Duty

- / Ottimo equilibrio tra corrente di spunto e resistenza ai cicli di carica e scarica, per impieghi gravosi
- / Alta resistenza alle vibrazioni
- / Ridotta autoscarica
- / Consumo d'acqua molto basso

### LKW PROFİ Starter

- / Avviamenti sicuri in ogni condizione
- / Resistenza alle vibrazioni





Tipo	Ah	A EN	Tipo polo	Polarità	Fissaggio alla base	Schema	Dimensioni
<b>L0 44 +</b>	44	390	1	0	B13		
<b>CITROEN:</b> C1 1.0 <b>FIAT:</b> 500 1.2 - Doblò 1.2 (Cargo) - Grande Punto 1.2, 1.4, 1.4 Van(B) - Punto 1.1 Van, 1.2 (Van) - Seicento 1.1 <b>LANCIA:</b> Musa 1.4 Oro, Platino - Nuova Musa 1.4, 1.4 16V - Ypsilon 1.2, 1.4 (16V) <b>PEUGEOT:</b> 107 1.0 <b>TOYOTA:</b> Aygo 1.0 - Yaris 1.0 VVT-i							
<b>L1B 46 + *</b>	46	450	1	0	B13/B15		
<b>FORD:</b> Escort VI 1.1, 1.3, 1.4, 1.6 - Fiesta 900, 1.1, 1.3, 1.4, 1.6 - Fiesta IV 1.2, 1.3, 1.4 - Fiesta V 1.2, 1.4, 1.6 - Fiesta XR, XR 2i, XR Turbo - Focus Clipper 1.4 I - Focus C-Max 1.6 (Ti) - Focus II 1.4, 1.6 (Ti) - Focus II Cabriolet 1.6 - Fusion 1.2, 1.4, 1.6 - KA 1.3 I, 1.6 Sportka - Orion 1.3, 1.4, 1.6 - Streetka 1.6 - Courier 1.3 <b>MAZDA:</b> 2 Demio 1.2 16V, 1.4 16V - 121 1.3 <b>NISSAN:</b> Micra 1.0 16V, 1.2 16V, 1.4 16V - Note 1.4 - Primera New 1.6 16V, 1.8 16V <b>OPEL:</b> Agila 1.0 12V, 1.2 16V - Corsa A 1.0, 1.2, 1.4 GSI - Corsa B 1.0 12V, 1.2 16V - Speedster 2.0 Turbo <b>SEAT:</b> Ibiza II 1.4 16V, 2.0 16V <b>SMART:</b> Roadster 0.7 (Brabus) <b>SUZUKI:</b> Splash 1.0, 1.2 - Swift III 1.5, Sport 1.6 16V - Wagon R+ 1.3 16V (4x4) <b>TOYOTA:</b> Yaris 1.0 16V, 1.3 Verso <b>VOLKSWAGEN:</b> Golf II 1.3 - Maggiolino - Polo 1.0, 1.3, 1.4							
<b>L1 55 +</b>	55	480	1	0	B13		
<b>ALFA ROMEO:</b> 147 1.6 16V - 156 1.6 I, 1.8 I 16V (SW) <b>CITROEN:</b> C1 1.4 HDi - C2 1.4 (16V) - C3 1.4 HDi - C3 Pluriel 1.4 I - C4 1.4, 1.6 16V - C4 Coupé 1.4, 1.6 <b>DACIA:</b> Logan (SW) 1.4, 1.6 <b>FIAT:</b> Bravo 1.4 T-Jet - Doblò 1.6 - Idea 1.2, 1.3 JTD, 1.4 - Idea Van 1.3 MJT, 1.4 Benzina - Multipla 1.6 - Panda 1.2 (4x4)(Van), 1.3 JTD (MJT)(4x4), 1.4 - Punto 1.3 JTD (MJT), 1.4, 1.8 - Stilo 1.4 <b>HYUNDAI:</b> Accent GLS 1.3, 1.5 - Elantra GLS 1.6 - Getz 1.3, 1.4, 1.6 - Matrix 1.6, 1.8 <b>LANCIA:</b> Y 1.3 JTD - Ypsilon 1.3 MJT <b>MERCEDES:</b> A 140 <b>NISSAN:</b> Qashqai 1.6 <b>PEUGEOT:</b> 1007 1.4, 1.6 - 206 1.4 (SW), 1.6 (CC) (Cabrio) (SW) - 207 1.4 (SW), 1.6 (CC)(SW) - 306 1.6 SW - 307 1.4 (SW), 1.6 (CC)(SW) - 308 1.4, 1.6 - 407 1.7, 2.2 - Ranch 1.6 <b>RENAULT:</b> Clio III 1.2, 1.4, 1.6 16V - Megane II 1.4 (SW), 1.6, 2.0 16V - Modus 1.4, 1.6 - Scenic Evol. 1.4 - Twingo 1.2 Turbo <b>SKODA:</b> Fabia 1.4 (Praktik), 1.6 <b>TOYOTA:</b> Yaris 1.8 VVTi <b>VOLKSWAGEN:</b> Golf V 1.4 16V (Plus)(Variant)(FSI)(TSI)							
<b>L2B 60 + *</b>	60	600	1	0	B13/B15		
<b>FORD:</b> C-Max 1.8, 2.0 - Escort VI 1.8, 2.0 - Fiesta IV 1.6 I Ghia 16V - Focus II 1.8, 2.0, 2.5 ST - Galaxy 2.0 I, 2.3 I - Mondeo IV 1.6 Ti, 2.0, 2.5 - Puma - S-Max 2.0, 2.5 ST <b>NISSAN:</b> Almera II 1.5 dCi <b>OPEL:</b> Astra 05 1.4, 1.6, 1.8 - Astra H 1.6, 1.8 SW (Twin Top) - Astra H 1.6, 1.8 Turbo (GTC) - Corsa C 1.4, 1.6 16V - Meriva 1.4, 1.6, 1.8 16V - Signum 1.8 - Tigra 1.8 Twin Top - Vectra C 1.8 (Break)(GTS) - Zafira 1.6 I, 1.8 16V <b>SEAT:</b> Alhambra - Ibiza 1.5 <b>TOYOTA:</b> Avensis 1.8 16V <b>VOLKSWAGEN:</b> Corrado 2.0I - Golf III 1.4, 1.6, 2.0 GTI - Passat 1.8, 2.0, 2.8 VR6 - Polo 1.6 - Vento 1.8							
<b>L2 65 +</b>	65	570	1	0	B13		
<b>ALFA ROMEO:</b> 156 2.0i JTS (SW), 1.9 JTD - 159 1.9 JTDm - 159 1.9, 2.2 JTS (SW) - Brera 2.2, 3.2 JTS V - GT 1.8 16V, 2.0 (JTS), 3.2 V6 - GT 1.9 M-JET - Spider 2.2, 3.2 JTS <b>AUDI:</b> A3 1.8 TFSI - A3 Sportback 1.6 TFSI - A4 (Avant) 1.6, 1.8, 2.0 TFSI - A4 1.8 TURBO 20 V (Avant) (Quattro) - S3 1.8 (T)(Quattro) - TT 2.0 TFSI <b>CITROEN:</b> C2 1.6 HDi - C4 1.6, 2.0 HDi - C4 Picasso 1.6 i HDi, 2.0 i 16V (Hdi) - C5 1.6 HDi, 1.8 16V (SW), 2.0 (SW) <b>FIAT:</b> Bravo 1.6 MJT, 1.9 MJT - Doblò 1.9 MJT - Grande Punto 1.9 MJT - Idea 1.9 MJT - Multipla 1.9 MJT - Sedici 1.6 16V 4x4 - Stilo 1.6, 1.8 16V <b>JAGUAR:</b> X-Type Estate 3.0 <b>KIA:</b> Carens III 2.0 CVVT <b>LAND ROVER:</b> Freelander 1.8 <b>MERCEDES:</b> A 150, 160 <b>MINI:</b> Cooper (Cabrio)(S) - One (Cabrio) <b>MITSUBISHI:</b> Colt V 1.5 (DI-D)(CZT) <b>NISSAN:</b> Note 1.5 dCi - Qashqai 2.0 <b>OPEL:</b> Vectra B 2.2 16V, 2.5 I V6 <b>PEUGEOT:</b> 1007 1.6 HDi - 107 1.4 HDi - 207 1.6 HDi (SW) (CC) 1.4 HDi - 307 (SW) 2.0 HDi - 308 1.6 HDi - 407 1.6, 2.0 (HDI), 3.0 V6 - 607 2.2 (HDI), 3.0 V6 - 807 2.0 (HDI), 2.2, 3.0 V6 <b>RENAULT:</b> Clio III 2.0 - Laguna 2.0 - Megane 2.0 SAAB: 9-3 1.8 Cabriolet (Sport Sedan), 2.0i (Cabrio) - 9-5 2.0 (SW) <b>SEAT:</b> Altea 1.8 TFSI, 2.0 FSI - Arosa 1.4 TDI - Cordoba 2.0 - Ibiza 1.8 T Cupra R - Leon 2.0 TFSI, 2.8 Cupra 4 - Toledo III 1.8 TFSI <b>SKODA:</b> Octavia 2.0 FSI - Superb 1.8 T, 2.0 <b>SMART:</b> Fortwo Cabrio 0.8 Cdi (Coupé) <b>TOYOTA:</b> Auris 1.6 VVTi - Avensis 2.0, 2.4 - Aygo 1.4 HDi - Corolla 1.6 VVTi - Yaris D-4 <b>VOLKSWAGEN:</b> Bora 1.6 Autom. (Variant) - Eos 1.6, 2.0 FSI - Fox 1.4 TDI - Golf IV 1.6 (Variant) - Golf V 1.6 Plus (FSI) - Jetta III 2.0 TFSI - Lupo 1.4, 1.7 SDI - New Beetle Cabriolet 1.8 T, 2.0 - Passat (Variant) 1.6 (FSI), 2.0 TFSI - Polo 1.6, 1.8 GTI - Sharan 1.8 T - Tiguan 2.0 TFSI - Touran 1.6 (FSI), 2.0 <b>FSI VOLVO:</b> C30 1.8, 2.0 - S40 1.8 - S60 2.4 (Optima) - V40 1.8 (Optima) - V50 1.6, 1.8							
<b>L3B 71 + *</b>	71	680	1	0	B13/B15		
<b>FORD:</b> C-Max 1.6 TDCi - Fiesta V 1.4, 1.6 TDCi - Focus C-Max 1.6, 1.8 - Focus II 1.6, 1.8 TDCi - Fusion 1.4, 1.6 TDCi - Mondeo III 1.8 SCi SW, 2.0 TDDi <b>JEEP:</b> Cherokee 2.5 TD - Grand Cherokee 2.5 TD <b>NISSAN:</b> Almera II 2.2 dCi <b>OPEL:</b> Agila 1.3, 1.7 CDTi - Astra G 2.0 16V, 2.2 DTi - Astra H 1.3, 1.7, 1.9 CDTi (16V), 2.0 Turbo - Corsa B 1.5 D (TD) - Corsa C 1.7 DI (DTi) - Frontera B 2.2 DTi - Sigum 2.0, 2.2 DTi - Vectra C 2.2 16V, 1.9, 2.2 CDTi - Zafira 2.0, 2.2 16V <b>RENAULT:</b> Clio II 3.0 V6 - Grand Scenic 2.0 - Laguna II 1.9, 2.2 DCi - Megane I 1.5 dCi, 1.9 DCi (DTi)(SW) - Scenic 1.5 DCi - Scenic Evol. 1.9 DCi (DTi), 2.0 <b>SEAT:</b> Cordoba 1.9 D (TD) - Ibiza II 1.9 D (TD) <b>SKODA:</b> Fabia 1.9 SDI (TDi) <b>SUZUKI:</b> Ignis II 1.3 DDi - Splash 1.3 DDiS - Swift III 1.3 DDiS <b>VOLKSWAGEN:</b> Golf II 1.6 D (TD) - Jetta 1.6 D (TD)							

\* Su vecchi modelli Ford utilizzare specifici adattatori.

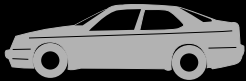


# POWER PROFI

Tipo	Ah	A EN	Tipo polo	Polarità	Fissaggio alla base	Schema	Dimensioni
<b>L3 80 +</b>	80	680	1	0	B13		
<p><b>ALFA ROMEO:</b> 156 GTA Selespeed (SW) <b>AUDI:</b> A4 2.4, 3.2 FSI (Quattro) (Avant) - A4 Cabriolet 2.0 (TFSI) - A6 2.0 (TDI)(TFSI), 2.8 FSI (Quattro) - A6 Avant 2.0, 3.0 (Quattro) <b>BMW</b> (--&gt;'06): 130i - 318 Ci Cabriolet - 320i <b>CITROEN:</b> C6 2.7 Hdi, 3.0 V6 - C8 2.0 HDi <b>FERRARI:</b> 550 Barchetta 5.5 - 599 GTB Fiorano 6.0 <b>FIAT:</b> Ulysse 2.0, 3.0 <b>HYUNDAI:</b> Trajet 2.0 CRDi <b>JEEP:</b> Cherokee 2.8 CRD - Commander 3.7 V6, 4.7 V8, 5.7 V8 - Grand Cherokee III 3.7 V6, 5.7 V8, 6.1 V8 <b>LAND ROVER:</b> Freelander-2 2.0 Td4, 3.2 <b>MERCEDES:</b> A 160 CDI, A 170 CDI, A 190, A 210 - B 150-&gt;200 - C 180, 200 Kompressor - C 230, 280 (4-matic) - CLK 200, 240 <b>NISSAN:</b> Navara 2.5 dCi (4WD) - Pathfinder 2.5 dCi 4WD <b>OPEL:</b> Signum 1.9 CDTI - Vectra C 1.9 CDTI <b>PEUGEOT:</b> 407 2.7 Hdi (SW), 3.0 V6 Coupé - 807 2.2 Hdi <b>PORSCHE:</b> 911 3.6 Carrera - 911 3.8 Carrera <b>RENAULT:</b> Espace IV 2.0 (Turbo) - Grand Scénic 1.9 dCi - Laguna III 2.0 dCi - Megane II 1.9, 2.0 dCi <b>SAAB:</b> 9-3 (Cabrio)(SW) 1.9 TiD, 2.0 T, 2.8 T - 9-5 3.0 V6 - 9-5 1.9 TiD (SW) <b>SKODA:</b> Octavia 1.9, 2.0 TDI <b>VOLKSWAGEN:</b> Eos 2.0 TDI - Golf V 2.0 TDI, 2.0 FSI - New Beetle 1.9 TDI - Passat (Variant) 2.0 TDI - Tiguan 2.0 TDI <b>VOLVO:</b> XC70 Cross Country 2.4, 2.5 - XC90 2.5</p>							

<b>L5 100 +</b>	100	800	1	0	B13		
<p><b>ALFA ROMEO:</b> 166 3.2 V6 24V <b>BMW</b> (--&gt;'06): 520, 525, 530, 535 d (Touring) - 540, 545 i (Touring) - 650 i (Cabriolet) <b>FERRARI:</b> Scaglietti 5.7 <b>JAGUAR:</b> S-Type 2.5 V6, 4.2 V8 <b>JEEP:</b> Grand Cherokee III 3.0 CRD <b>LAND ROVER:</b> Defender 110 2.4 TD4 4WD - Discovery III 2.7 TD, 4.4 - Range Rover III 3.6 TD 8, 4.2 Sport <b>MERCEDES:</b> C 350 - C 63 AMG - CL 55 AMG, 600 - E (--&gt;'07) 200 Kompressor, 280, 350 - G 270, 320, 400 CDI - ML (--&gt;'05) 270, 400 CDI - ML (--&gt;'05) 320, 350, 500, 55 AMG - S (--&gt;'05) 320, 400 CDI - S 55 AMG, 320, 430, 500, 600 - SLK (--&gt;'04) 32 AMG, 320 <b>PORSCHE:</b> Cayenne 3.2, 3.6 - Cayenne Turbo S 4.5, 4.8 <b>VOLKSWAGEN:</b> Touareg 5.0 V10 TDI</p>							

<b>L6 110 +</b>	110	950	1	0	B13		
<p><b>AUDI:</b> A5 2.7 TDI, 3.0 TDI, 3.2 FSI, S5 - A8 2.8 FSI, 3.0, 4.0, 4.2 TDI - A8 3.2 FSI, 3.7 quattro, 4.2 FSI quattro, S8 - Q7 3.0, 4.2 TDI quattro - Q7 3.6, 4.2 FSI quattro - R8 4.2 quattro <b>CITROEN:</b> Jumper 3.0 HDi <b>FIAT:</b> Ducato 30, 33, 35 3.0 MJT</p>							

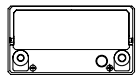
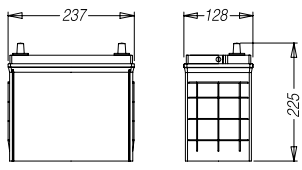


# PROFI

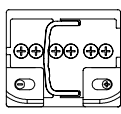
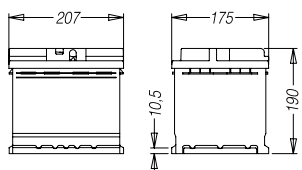
Tipo	Ah	A EN	Tipo polo	Polarità	Fissaggio alla base	Schema	Dimensioni
<b>B19J 35</b>	35	280	3	0	B00		
<p><b>DAIHATSU:</b> Charade 1.3, 1.5 Sedan, 1.6 GTI - Copen 0.7, 1.3 - Cuore 1.0 - Domino 850 - Feroza - Materia 1.3, 1.5 - Move 847 I - Sirion 1.0, 1.3 (DWVT) - Terios 1.3 4WD CX, 1.5 16V 4WD (DWVT) - Trevis 1.0 - YRV 1.0, 1.3 <b>HONDA:</b> Jazz 1.2, 1.4 <b>HYUNDAI:</b> Atos Prime 1.1 <b>MITSUBISHI:</b> Carisma 2.0 4WD <b>SUZUKI:</b> Ignis 1.3i - Liana 1.3, 1.6 (SW)(4WD) - Vitara 1.6 I JLXS - Wagon R</p>							
<b>B19JX 35</b>	35	280	3	1	B00		
<p><b>DAEWOO:</b> Matiz 0.8, 1.0 <b>SUZUKI:</b> Alto 1.0 - Carry - Jimny 1.3 16V 4WD - Super Carry - Swift III 1.3 16V (4x4)</p>							
<b>B19JAK 35</b>	35	280	3	0	B01		
<p><b>HYUNDAI:</b> Atos Prime 1.0, 1.1 (05--&gt;) - i10 1.1 <b>KIA:</b> Picanto 1.0, 1.1</p>							



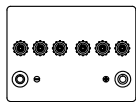
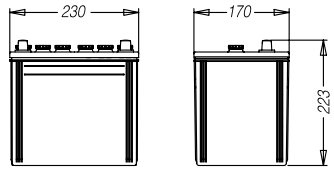


Tipo	Ah	A EN	Tipo polo	Polarità	Fissaggio alla base	Schema	Dimensioni
<b>B24JX 45</b>	45	330	3	1	B00	+  -	

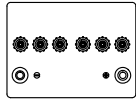
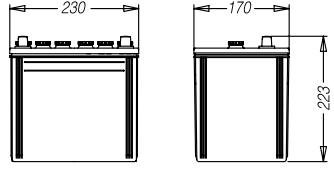
**HONDA:** Civic 1.8 VTEC, 2.0i TD (Aerodeck) **SUBARU:** Justy 1.2, 1.3 **SUZUKI:** Baleno 1.6i - Grand Vitara 1.6i, 2.0i Wagon - Jimny 1.3i 4WD(Cabrio) - Samurai 1.3i - Vitara 1.6i Cabrio JLX DLS  
**TOYOTA:** Yaris 1.3i (Verso), 1.5i

<b>L1 50</b>	50	420	1	0	B13	-  +	
--------------	----	-----	---	---	-----	--	---

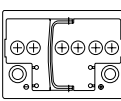
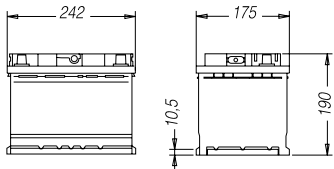
**ALFA ROMEO:** 146 1.4, 1.7, 1.8 - 147 1.6 16V **CITROEN:** Berlingo 1.6, 1.8 (Multispace) - C1 1.4 HDi - C2 1.1, 1.4 (16V) - C3 1.4 HDi - C4 1.4, 1.6 16V **DACIA:** Logan (SW) 1.4, 1.6 **FIAT:** 500 1.4 16V - Bravo 1.4 T-Jet - Doblo 1.2 - Fiorino 1.3 MJT - Grande Punto (Van) 1.3 MJT - Idea 1.2, 1.3 JTD, 1.4 - Idea Van 1.3 MJT, 1.4 Benzina - MULTIPLA 1.6 - Panda 1.2 (4x4)(Van), 1.3 JTD (MJT)(4x4), 1.4 - Punto 1.3 JTD (MJT), 1.4, 1.8 - Stilo 1.4 **HYUNDAI:** Accent GLS 1.3, 1.5 - Elantra GLS 1.6 - Getz 1.3, 1.4, 1.6 - Matrix 1.6, 1.8 **LANCIA:** Y 1.3 JTD - Ypsilon 1.3MJT **NISSAN:** Almera 1.5, 1.8 Qashqai 1.6 **PEUGEOT:** 1007 1.4, 1.6 - 206 1.4 (SW), 1.6 (SW) - 207 1.4 (SW), 1.6 (SW) - 306 1.6 SW - 307 1.4 (SW), 1.6 (SW) - 308 1.4, 1.6 - 407 1.7, 2.2 - Ranch 1.6 **RENAULT:** Clio III 1.2, 1.4, 1.6 16V - Megane 1.4, 1.6 16V - Modus 1.2, 1.4, 1.6 - Scenic Evol. 1.4 - Thalia 1.2 16V - Twingo 1.2 Turbo **ROVER:** 25 1.4, 1.6 - 45 1.4, 1.8 **SKODA:** Fabia 1.4 (Combi)(Praktik), 1.6 (Combi) **TOYOTA:** Yaris 1.8 VVTi **VOLKSWAGEN:** Golf V 1.4 16V (Plus)(Variant)(FSI) (TSI)

<b>D23 60</b>	60	420	1	0	B00	-  +	
---------------	----	-----	---	---	-----	--	--

**HONDA:** NSX 3.0, Coupè, TF Matic - Prelude 2.0, 2.2 **HYUNDAI:** Trajet 2.0, 2.7 V6 - Tucson 2.0 16V, 2.7 4WD **ISUZU:** Van (83->) **KIA:** Sportage 2.0 16V (4WD), 2.7 V6 4WD **LEXUS:** IS 200  
**MAZDA:** "2" 1.5 16V - "3" 2.2 TD - 323 1.7D, 1.8 TRSI - 626 1.8i, 2.0i - Impreza 2.0 D - MPV 2.3 - MX3 1.8i 16V - MX6 2.0i, 2.5i V6 - RX7 Biturbo **NISSAN:** 100 NX Coupè - 300 3.0 ZX, 3.0i V6 (Turbo) - Maxima QX 2.0 V6, 3.0i - Murano 3.5 4x4 - Primera SW - Sunny 1.4i - X Trail 2.0 **SUBARU:** Forester 2.0, 2.0 GPL, 2.0T - Impreza 2.0 D, 1.6, 2.0 STI Turbo, 2.0T (AWD)(SW) - Legacy 2.0, 2.5 AWD(TW) - Outback 2.5 **SUZUKI:** Grand Vitara 2.5i V6 (SW), 2.7 XL7 **TATA:** Indica 1.4D **TOYOTA:** Carina II - Celica 1.6 STI, 1.8i Coupè, 1.8VVT-I, 1.8VVTI-L T Sport, 2.0 GTI, 2.0i Coupè - Corolla 1.6i, 1.8i 4WD - Picnic 2.0i - Previa 2.4 16V - Supra 3.0 Turbo ABS

<b>D23X 60</b>	60	420	1	0	B00	+  -	
----------------	----	-----	---	---	-----	--	---

**DAEWOO:** Evanda 2.0 16V - Lacetti 1.4, 1.6 **HONDA:** Accord 2.0, 2.2 **HYUNDAI:** Elantra 2.0i 16V - Tiburon 2.0i 16V **ISUZU:** KB 1.6, 2.0 **KIA:** Mentor 1.6i - Rocsta (93->) - Sportage 2.0  
**MITSUBISHI:** 3000 GT - COLT 1.3i, 1.6 GLXi, 1.8i GT - Eclipse - Galant 1.8i GL, GLS - Lancer 2.0 GL, GLX - Sigma 3.0i - Space Wagon 2.0i GLX **NISSAN:** 200SX, Silvia - Terrano 3.0V6 **SUBARU:** SVX 3.3i **SUZUKI:** Vitara 1.9TD, 2.0TD **TOYOTA:** Yaris Verso 1.4 D-4D, 1.4 TDI D-4D

<b>L2 60</b>	60	510	1	0	B13	-  +	
--------------	----	-----	---	---	-----	--	---

**ALFA ROMEO:** 147 1.9 (JTD)(MJT) - 147 2.0 - 156 1.6 (SW), 2.0i JTS (SW), 1.9 JTD - 159 1.8 (SW), 1.9 JTDm - 159 1.9, 2.2 JTS (SW) - Brera 2.2 - GT 1.8, 2.0 (JTS), 1.9 MJT - Spider 2.2 JTS  
**AUDI:** A3 1.8 TFSI - A3 Sportback 1.6 TFSI - A4 1.6, 1.8 TFSI, 2.0 TFSI - A4 1.8 T (Avant) (Quattro) - A4 Avant TFSI 1.6, 1.8, 2.0 - S3 1.8 (T)(Quattro) - TT 2.0 TFSI (Roadster) **CITROEN:** C2 1.4, 1.6 HDi (Pluriel) - C4 (Coupè) 1.6 HDi - C4 Picasso 1.6i 16V (HDi) - C5 1.6 HDi, 1.8 (SW), 2.0 (SW) **FIAT:** Bravo 1.6 MJT, 1.9 MJT - Doblo 1.9 JTD (MJT) - Grande Punto 1.9 MJT - Idea Van 1.9 MJT - Multipla 1.9 MJT - Punto 1.9 JTD - Scudo 1.6 HDi - Sedici 1.6 4x4 - Stilo 1.6, 1.8 16V **KIA:** Carens 2.0 CVVT - Cerato 1.6 **MINI:** Cooper (Cabrio)(S) - One (Cabrio) **MITSUBISHI:** Colt VI 1.5 (DI-D)(CZT) **NISSAN:** Note 1.5 dCi - Qashqai 2.0 **OPEL:** Vectra B 2.2 16V **PEUGEOT:** 1007 1.4 HDi - 107 1.4 HDi - 206 1.4 (HDi), 2.0 CC - 207 1.4, 1.6 (HDi) - 307 (SW) 1.4, 1.6 HDi - 308 1.6 HDi - 406 2.0 HDi - 407 1.6 HDi - 607 2.2 (HDi) - 807 2.0 (HDi), 2.2 **RENAULT:** Clio 2.0 - Kangoo 1.5 DCI, 1.6 - Laguna 2.0 - Megane 2.0 **SAAB:** 9-3 1.8 Cabriolet (Sport Sedan) - 9-5 2.0 (SW) **SEAT:** Altea 1.6 FSI, 1.8 TFSI - Arosa 1.4 TDI - Cordoba 1.6 (Vario) - Ibiza 1.6 - Leon 1.6, 1.8 T - Toledo 1.6, 1.8 TFSI **SKODA:** Octavia 1.6 (FSI), 1.8 T (Wagon) - Roomster 1.4 (TDI), 1.6 **SMART:** Fortwo Cabrio 0.8 Cdi (Coupè) **TOYOTA:** Auris 1.4, 1.6 VVTi - Avensis 1.6 VVTi, 1.8 - Aygo 1.4 HDi - Corolla 1.4, 1.6 VVTi (SW)(Verso), 1.8 VVTi - Yaris D-4 **VOLKSWAGEN:** Eos 1.6 - Fox 1.4 TDI - Golf IV 1.6 - Golf V 1.6 Plus (FSI) (Variant) - Jetta 1.6 FSI - Lupo 1.4 - New Beetle Cabriolet 1.4, 1.6, 1.8 T, 2.0 - Passat (Variant) 1.6 (FSI), 2.0 TFSI - Polo 1.4, 1.6 - Sharan 1.8 T - Tiguan 1.4 TSI, 2.0 TFSI - Touran 1.4 TSI, 1.6 (FSI), 2.0 FSI **VOLVO:** C30 1.6, 1.8, 2.0 - S60 2.4 (Optima) - S40 1.6, 1.8 - V40 1.6 (Optima), 1.8 (Optima) - V50 1.6, 1.8



Tipo	Ah	A EN	Tipo polo	Polarità	Fissaggio alla base	Schema	Dimensioni
------	----	------	-----------	----------	---------------------	--------	------------

<b>L2X 60</b>	60	510	1	1	B13		
---------------	----	-----	---	---	-----	--	--

**CHRYSLER:** 300M 2.7, 3.5 (V6) **DAEWOO:** Lanos 1.3i, 1.5i, 1.6i - Leganza 2.0 - Nubira 1.6, 2.0 - Tacuma 1.6i **FIAT:** Fiorino D - Penny D **JEEP:** Cherokee 4.0 - Wrangler 2.5, 3.8, 4.0 **KIA:** Joice 2.0 **LADA:** Niva 1.6, 1.7i **NISSAN:** Terrano 2.4 - Terrano II 2.4i **OPEL:** Antara 2.4

<b>L3 70</b>	70	600	1	0	B13		
--------------	----	-----	---	---	-----	--	--

**ALFA ROMEO:** 156 1.9 Q4, 2.5 V6 **AUDI:** A2 1.2 TDI **CITROEN:** Berlingo 2.0 HDI - Saxo 1.9 D - C25 D 2.0 **FIAT:** Cromia 1.9 TD **LANCIA:** Thema 2.5 TD **OPEL:** Astra F 1.7 D, TD **PEUGEOT:** Expert 1.9 D - Ranch 1.9 D **RENAULT:** Kangoo 1.9 D, TD - R19 1.9 D, TD - Safrane 2.1 TD, 2.2 TD **SEAT:** Ibiza I 1.7 D - Inca 1.9 SDI **SKODA:** Fabia 1.9 SDI

<b>L3X 70</b>	70	600	1	1	B13		
---------------	----	-----	---	---	-----	--	--

**BENTLEY:** Continental - Turbo R **CHRYSLER:** 300M V6 - Le Baron - Neon 2.0i (AUT.) - New Yorker 3.5V6 - Saratoga 2.5T, 3.0V6 - Stratus - Viper 8.0i V10 - Vision 3.5V6 - Voyager III 2.4 LS, 3.3 LX, 3.8V6 **FIAT:** Duna 1.7D **HONDA:** Accord 2.0TD **OPEL:** Antara 3.2 V6

<b>L3 74</b>	74	640	1	0	B13		
--------------	----	-----	---	---	-----	--	--

**AUDI:** A2 1.4, 1.6 FSI - A3 Sportback 1.9, 2.0 TDI, S3 quattro - A3 Sportback 2.0 FSI (TFSI)(Quattro) - A4 1.9 TDI, 2.0 TDI (Quattro) (Avant) - TT 3.2 V6 quattro (Roadster) **BMW (---'06):** 118 i, 120 i, 130 i - 318 Ci Cabriolet - 318 i, 320 i **CITROEN:** C5 (Break) 2.0, 2.2 Hdi - C-Crosser 2.2 HDi - C8 2.2 HDi **DACIA:** Logan 1.5 dCi (SW) **HONDA:** Accord 2.2 i CTDI - Civic VI 1.7 CTDI - Civic VII Hatchback 2.2 CTDI - CRV II 2.2 CTDI - FRV 2.2 i CTDI **MERCEDES:** A 160, 170, 180, 200 CDI - B 150, 170 - B 180, 200 CDI **NISSAN:** Qashqai 1.5, 2.0 dCi, 2.0 dCi 4x4 **PEUGEOT:** 407 2.2 Hdi (SW), 3.0 V6 Coupé - 807 2.2 Hdi **RENAULT:** Clio 1.5 dCi - Espace IV 2.0 (Turbo) - Grand Scénic 1.5, 1.9 dCi - Laguna III 1.5, 2.0 dCi - Megane II 1.5, 1.9, 2.0 dCi - Modus 1.5 dCi - Thalia 1.5 dCi **SEAT:** Altea XL 1.9, 2.0 TDI - Cordoba 1.4, 1.9 TDI - Ibiza IV 1.9 TDI Cupra R - Leon 2.0 TDI - Toledo III 1.9, 2.0 TDI **SKODA:** Fabia 1.4, 1.9 TDI - Octavia 1.9, 2.0 TDI - Roomster 1.9 TDI - Superb 2.8 V6 **SMART:** Forfour 1.5 CDI **SUZUKI:** SX4 1.5, 1.6 VVT (DDiS), 1.9 DDiS **TOYOTA:** Auris 1.4 D-4D, 2.0 D-4D - Corolla 1.4 D, 2.0 D-4D (Verso) **VOLKSWAGEN:** Eos 2.0 TDI, 2.0 TFSI, 3.2 V6 - Golf V 1.9 TDI (Plus)(Variant) - Golf 2.0 TDI, 2.0 FSI - New Beetle 1.9 TDI, 2.3 V5, RSI 3.2 - Passat (Variant) 1.9, 2.0 TDI - POLO 1.4, 1.9 TDI - Sharan 2.8 V6 - Tiguan 2.0 TDI **VOLVO:** C30 1.6 D, 2.0 D, 2.4 i, T5 - C70 Cabriolet 2.4, 2.5, T5 - S40 II 2.0, 2.4 - S60 2.4 T5, 2.5 - S80 II 2.5, 3.0 T6 AWD - V50 2.0, 2.4, T5

<b>L4B 75</b>	75	640	1	0	B13		
---------------	----	-----	---	---	-----	--	--

**BMW:** 328i Cabrio - 528i 24V **OPEL:** Meriva 2.5 DTI - Vectra 2.0DTI, 2.2DTI (SW), GTS 3.0 - Zafira 2.2DTI

<b>D26 75</b>	75	640	1	0	B01		
---------------	----	-----	---	---	-----	--	--

**HYUNDAI:** Accent 1.5 CRDi GLS - Coupe 1.6, 2.0 16V, 2.7 24V - Getz 1.5 CRDi (GLS) - Grandeur 2.2 CRDi, 3.3 - i30 1.6, 2.0 CRDi - Matrix 1.5 CRDi - Santa Fè 2.7 (V6 GLS 4x4) - Sonata 2.0 VTI GLS, 2.4, 3.3 **KIA:** Cee'd 1.6, 2.0 CRDi - Cerato 1.5, 1.6, 2.0 CRDi **LEXUS:** RX 300 - SC430 **MAZDA:** RX 8 Wankel 2.6 **MITSUBISHI:** Pajero 3.2 DI-D 4WD, 3.8 V6 **NISSAN:** X-Trail 2.0 dCi **SUZUKI:** Grand Vitara 1.9 DDiS - Jimny 1.5 DDiS 4WD **TOYOTA:** Camry 1.8, 2.4, 3.0 V6



Tipo	Ah	A EN	Tipo polo	Polarità	Fissaggio alla base	Schema	Dimensioni
<b>D26X 75</b>	75	640	1	1	B01		
<p><b>HYUNDAI:</b> Elantra II 2.0 CRDi <b>KIA:</b> Sorento 2.4 <b>LEXUS:</b> GS 300, 400, 430 <b>MITSUBISHI:</b> Lancer 2.0 D - Pajero V6 - Space Gear 2.5 TDI - Space Runner 1.8 I 4WD, 2.0, 2.4 <b>TOYOTA:</b> Hiace IV 2.4, 2.4 4WD, 2.7, 2.7 4WD - 4 Runner 3.0 V6</p>							
<b>L4 82</b>	82	720	1	0	B13		
<p><b>ALFA ROMEO:</b> 159 3.2 JTS V6 <b>AUDI:</b> A2 1.4 16V, 1.4TDI - A4 1.9 TDi, 2.0, 2.4 V6 <b>BMW:</b> (-&gt; '06) 318 TD - 320D - 325i - 330i, Ci, Xi - 520i, D - 525i, D ('07-&gt; solo per allestimenti base): 118d - 120d - 123d - 318d - 320i, d - 330i, xi, d, xd - 520i, d - 530i, xi, d, xd - 630i - X3 2.0i, 3.0si - X3 2.0d <b>JAGUAR:</b> X-Type 2.5, 3.0, 2.0 D, 2.2 D <b>LAND ROVER:</b> Freelander-2 2.2 TD4 <b>OPEL:</b> Antara 2.0 CDTI <b>RENAULT:</b> Espace IV 1.9, 2.0, 2.2, 3.0 dCi <b>SKODA:</b> Superb 1.9, 2.0, 2.5 TDi <b>TOYOTA:</b> Auris 2.0, 2.2 D-4D - Avensis 2.0, 2.2 D-4D - Corolla Verso 2.2 D-4D <b>VOLKSWAGEN:</b> Passat 1.9, 2.0, 2.5 TDi - Sharan 1.9, 2.0 TDI - Touran 1.9, 2.0 TDI <b>VOLVO:</b> C30 D5 - C70 cabriolet D5 - S40 II 1.6 D, 2.0 D - V50 1.6 D, 2.0 D - V70 2.4 D, 2.5, 3.0 - XC70 Cross Country 3.2, 2.4 D5 AWD</p>							
<b>L5B 85</b>	85	760	1	0	B13		
<p><b>BMW:</b> 330 CD Coupé - 525 TDS - 530i, (530 V8 (Touring) (-&gt; '00)) - 540 V8 (Touring) - 725, 725 TDS - 728i - (730 I - 730 D - 730 LI (-&gt; '01)) - 740 D <b>OPEL:</b> Omega 2.5 TD - Sigm 3.0 V6 CDTI</p>							
<b>L5 92</b>	92	760	1	0	B13		
<p><b>ALFA ROMEO:</b> 164 D, TD <b>AUDI:</b> A4 3.0 V6 <b>BMW:</b> 325TD, TDS <b>CITROEN:</b> C25 D, TD 2.5 - C32 D - C35 D, TD <b>MERCEDES:</b> E 280, 320 (4-MATIC) - 420, 430 (4-MATIC) - E 50 AMG, E 55 AMG (4-MATIC) - 250 D (TD), 270 CDI, 290 TD, 300 D (TD), 320TDI - G 290 GD TD - G 300 TD - S 300 TD, 350 TD - 209 - 309 - SPRINTER 2-t Panel van 214, 214 NGT - 314 4x4, 314 NGT - SPRINTER 4-t Panel van 414, 414 4x4 - 208 D - 210 D - 407 D - 409 D - 507 D - SPRINTER 211 CDI, 213 CDI, 216 CDI - 210 D - 212 D - SPRINTER 308 CDI, 311 CDI, 316 CDI - SPRINTER 408 CDI 35 - 416 CDI 35, 416 CDI 46 (4x2) <b>RENAULT:</b> Safrane 2.5 TD <b>VOLKSWAGEN:</b> Sharan 1.9 TD (TDI)</p>							
<b>D31 95</b>	95	760	1	0	B01		
<p><b>HYUNDAI:</b> Santa Fé 2.2 CRDi (4x4) - Sonata V 2.0 CRDi - Terracan 2.9 CRDi - Tucson 2.0 CRDi 4WD <b>ISUZU:</b> D-MAX <b>KIA:</b> Carens III 2.0 CRDi - Carnival III 2.9 CRDi - Magentis 2.0 CRDi - Sportage 2.0 CRDi <b>MAZDA:</b> "5" 2.0 CD, 1.8, 2.0 - "6" 2.0 DI, 1.8, 2.0, 2.5 (SW) <b>MITSUBISHI:</b> Grandis 2.0 DI-D - L 200 DI-D - Outlander 2.0, 2.2 DI-D, 2.4 Mivec - Pajero III 2.5 TDI, 3.2 DI-D <b>NISSAN:</b> Patrol 2.8, 3.0 DDTI <b>PEUGEOT:</b> 4007 2.2 Hdi <b>SUZUKI:</b> Grand Vitara 1.9 DDiS <b>TOYOTA:</b> Land Cruiser 3.0 D-4D - Rav 4 III 2.2 D-4D</p>							
<b>D31X 95</b>	95	760	1	1	B01		
<p><b>FORD:</b> Ranger 2.5 TD (4x4) <b>ISUZU:</b> Trooper <b>KIA:</b> Sorento 2.5 D (-&gt;'05) <b>MITSUBISHI:</b> Pajero 3.5 V6 GDI <b>SSANGYONG:</b> Actyon 2.0 Ddi 4x4, 2.3 4x4 - Kyron 2.0 Xdi (4x4), 2.7 Xdi - Rexton RX 2.3 4x4, 2.8 4x4, 3.2 - Rexton 2.7 Xdi, 2.9 TD - Rodius 2.7 Xdi (4x4)</p>							



# LKW PROFI HEAVY DUTY

Tipo	Ah	A EN	Tipo polo	Polarità	Fissaggio alla base	Schema	Dimensioni
<b>A 120</b>	120	850	1	3	B01 integr.		
<b>CLAAS:</b> Classic - Commander - Cosmos - Dominator - Jaguar - Maxi - Mercur - Senator <b>DEUTZ-FAHR:</b> Agroprima - Agrostar - D 25, 30, 270 - D 5006, 7006, 8006 - DX 3.70, 6.05, 6.30 - Intrac 2003, 2004 <b>IVECO:</b> 440 E35T/P, E38/TP - Eurocargo (->'06) 80 E15 ->170 E23 <b>MAN:</b> M90 14.232->19.322 <b>MERCEDES BENZ:</b> Atego <b>STEYR:</b> 8060 - 8070 - 8080 - 8090 - 8110							
<b>MC12 120</b>	120	850	1	4	B03		
<b>CARRARO A.:</b> Tigrone Atlas 746 RS, 750, 750 RS, 765, 766 <b>CIMAS:</b> D.76 I - D.85 I - D.86 I - D.96 I - SF55 <b>DEUTZ-FAHR:</b> Agroplus 75, 85, 95 <b>HURLIMANN:</b> H356, 466, 496, 7600 - Prestige H/478 BDT - XT 85, 95 - XT 908 DT, 909 DT, 910.4 DT <b>KOMAT'SU:</b> PC 75, 95 - PW 75, 95 - SK09J/2 - WB70 A/1 <b>LAMBORGHINI:</b> Premium 850->1060 - R 6.100, 850, 904 DT, 904 DTS, 950, 955 DT, 956 - Triumph 80->100 <b>LANDINI:</b> DT9500 - Land Power 125->185 - Legend 120->160 - R7000 DT, 8000, 8500, 9500 <b>SAME:</b> Jaguar 95 Dt - Krypton 80->100 - Laser 85, 90, 100 - Leopard 85 - Minitaurus 60 - Panther 90, 95 DT - Silver 80->100 DT - Trident 130							
<b>MT 132</b>	132	950	1	0	B01		
<b>AGRIFULL TOSELLI:</b> 70 - 80 - 90 S - 100 - 110 S - 140 <b>CARRARO SPA:</b> 820.5 - 920.5 Turbo <b>CASE IH:</b> JX 70->95 - JXU 85->105 - MAXXUM 100X->140X <b>LANDINI:</b> Legend 105, 115, 130, 145, 165, 180 - Mythos DT 110 <b>LAVERDA:</b> M112, 120, 132, 152MP <b>MC CORMICK:</b> MTX - T 70->100 <b>NEW HOLLAND:</b> 110/90 - serie 66 S - TL70->100 - TLA 70->100 - T 5030->5050 - T 6010->6080 <b>VALPADANA:</b> 2555, 2565, 2575, 2580, 5570, 5580, 5590, 5595							
<b>A 140</b>	140	950	1	3	B01 integr.		
<b>DAF:</b> CF 75.290->75.360 <b>MAN:</b> M2000 15.185 --> 25.285 - TGM 12.284, 13.280, 15.284, 18.284, 18.334, 26.330 <b>RENAULT TRUCKS:</b> M 140 --> 250.16 - MIDLUM 135.07->280.18 - PREMIUM D (->12/'06) - S 100.06-> 180.75 <b>SCANIA:</b> P 82 - P 92 - P 94 - P 230 DB - P 270 DB - P 310 DB <b>VOLVO:</b> FE 240 - FL 240							
<b>B 160</b>	160	1050	1	3	B00		
<b>ASTRA:</b> HD7/C <b>IVECO:</b> 190.33 Turbostar - 190 E27-> E42/P - 190 E43P->E52/P - 220.36 ('87->) - 240 E38->E52 - 260 E27->E43 - 330.26->330.35 ('87->) - 400 E39T/P, E43T/P - Eurocargo ('07->) 120, 130, 140, 150, 160 - Eurocargo 170 E27->320 E28 <b>JOHN DEERE:</b> 6510, 6610, 6910, 6920 <b>MAN:</b> F90 - F2000 19.293->35.464 - M90 22.361->32.342 <b>MERCEDES BENZ:</b> Actros - Atego 1828 L - 1850 - 2044 - 2050 - 3544 <b>RENAULT TRUCKS:</b> R 310->420 <b>STEYR:</b> 9115 base - 9125, 9145 confort <b>VOLVO:</b> FL 7 - FL 10 - FL 12 - FM 7 - FM 9 <b>VALTRA:</b> 6000 - 8000 - M serie - T serie <b>ZETOR:</b> 6441 - 7441 - 8441							
<b>MC15 160</b>	160	1050	1	4	B03		
<b>ASTRA:</b> HD7 64.34->64.45 <b>CARRARO SPA:</b> 68.2 - 78.2 - 88.2 - 98.2 <b>DEUTZ-FAHR:</b> Agroplus 100 - Agrotron K90->K120 <b>FAI:</b> Pala artic. 575, 585, 590, 595 - Terne <b>FIAT AGRI:</b> 550 - 600 - 650 - 800 - 850 - 1000 - 1300 <b>FIAT ALLIS:</b> FL10 B, 14 B - FR15 <b>HURLIMANN:</b> H6115, 7630, 8610 - SX 1200->2000 - XM 100->130 - XT 105, 115, 130 - XT 910.6->913 <b>IVECO:</b> (180.26 - 190.25, 30, 35 ->'86) - 220.35, 38 - (330.25, 26, 32, 35, 36 ->'86) <b>KOMAT'SU:</b> PC110R/1 - PW110R/1 <b>LAMBORGHINI:</b> Champion - Premium 1100, 1300 - R 1056 DT - R 1156 DT->R 1356 DT - R 4.120, 6.110 - R 4.105 -> R 7.200 <b>LAVERDA:</b> 3350 AL - 3450 - 3600 - 3700 - 3790 - 3890 - 3900 <b>SAME:</b> Antares - Bufalo - Drago - Iron - Laser - Silver 105->130 - Tiger							
<b>B 180</b>	180	1100	1	3	B00		
<b>CASE IH:</b> CVX - MXM - Puma 165->210 <b>CLAAS:</b> Ares - Atlas - Arion 510->540, 610->640 - Axion 810->850 <b>DAF:</b> CF 85 <b>DEUTZ FAR:</b> Agrotron 200, 215, 265 - TTV 1130->1160 - X 710, 720 <b>FENDT:</b> Vario 712->718, 818, 820, 922->936 <b>IVECO:</b> 190 E42, E52 - 190.42 Turbostar - 190.48 ('87->) - 260 E42 - 440 E42->E52 - Eurotech 190 E40->440E43 - Eurotraktor - Eurostar 240E27->440E52 - Stralis <b>JOHN DEERE:</b> 6530->6930 - Premium 7430, 7530 <b>LAMBORGHINI:</b> R6 VRT 150.7, 160.7 - R7.200 - R8.230 - R8.270 <b>MAN:</b> F2000 41.364->41.463 - TG/A - TGS - TGX <b>MERCEDES BENZ:</b> Axor <b>NEW HOLLAND:</b> T 7030->7060 <b>RENAULT TRUCKS:</b> AE 380->520 - AE Magnum 390->560 - Magnum E-tech - Magnum 400.18 ->480.19 - Premium D ('06->) - Premium R - Kerax <b>SAME:</b> Iron 130->185 - Iron Continuo 150.7, 165.7 <b>SCANIA:</b> P114, 124 - R114, 124, 144, 164 - T114, 124, 164 <b>STEYR:</b> CVT 120, 130, 150, 170 <b>VOLVO:</b> FE 280_18->320_26 - FH 12 - F 16 - FL 280_11.5->280_18 ('06->) - FM 9.340 - FM 9.380 - FM 10 - FM 12 - FM260->FM480 ('06->) - NH 12							



# LKW PROFI HEAVY DUTY

Tipo	Ah	A EN	Tipo polo	Polarità	Fissaggio alla base	Schema	Dimensioni
------	----	------	-----------	----------	---------------------	--------	------------

<b>MC15 185</b>	185	1200	1	4	B03		
-----------------	-----	------	---	---	-----	--	--

**ASTRA:** HD7 66.45, 84.38, 84.45, 86.45 **CASE IH:** CVX 140->195 **FIAT AGRI:** 160.90 DT - 180.90 - 1580 DT - 1880 **FIAT ALLIS:** FD20 - FE20 - FL20 **HURLIMANN:** H6170T - H6670, 6680, 6690 - H7650 **LAMBORGHINI:** 1506T - Racing 150, 165, 190 **LAVERDA:** 3400 - 3550 **MENARINI:** 110 L - 370.12.35 **NEW HOLLAND:** 7250->7550 **SAME:** Galaxi 170 - Hercules 160 Dt - Laser 150 - Supertitan - Titan

<b>CX 200</b>	200	1150	1	3	B00		
---------------	-----	------	---	---	-----	--	--

**DAF:** XF 95 - XF 105 **DEUTZ-FAHR:** D 40S, 400, 540 **FIAT ALLIS:** BD20 - T 360, 460 - TL 30, 40, 160, 260, 545, 546, 562, 645 - TS 160, 260 **HANOMAG:** 14D - 18C - K 12C, 15, 16 **INBUS:** S150 - U150 - U210FT - Y210 **IVECO:** Stralis Euro5 **MENARINI:** 418 AC - 419 AL **MERCEDES BENZ (Bus):** 0305 - 0307 - 0404 - 0405 - 0409 - Integro **NEOPLAN SCANIA:** Bus **SETRA:** Bus



# LKW PROFI STARTER

Tipo	Ah	A EN	Tipo polo	Polarità	Fissaggio alla base	Schema	Dimensioni
------	----	------	-----------	----------	---------------------	--------	------------

<b>G28 100</b>	100	720	1	0	B03		
----------------	-----	-----	---	---	-----	--	--

**CARRARO A.:** Ergit - Supercar - Tigre - Tigrecar - Tigrone **CARRARO SPA:** Agri Plus - 48.2 - 58.2 - 502 - 505 - 520.5 - 604 - 605 C - 655 CL - 720.5 **CASE IH:** JXC 1070->1095 - JX Quantum 85 C, 95 C **CLAAS:** Nectis 227->267 **DEUTZ-FAHR:** Agrolux 57, 60, 67, 70 - Agroplus 60 **FERRARI:** System 55->80 - Thor **GOLDONI:** Trattori serie 3000, Compact, Star 65, 75, 85 - Universal - 4000 Quadrifoglio **HYUNDAI:** Santa Fe 2.2 CRDi (4x4) - Sonata V 2.0 CRDi - H1 Autobus 2.5 CRDi ('06->) **HURLIMANN:** H358, 362, 372, 468/4, 476, 478, 488, 5650, 5660 - XA 56->86 - XE (F) Tradition 55, 70 - XA 656 DT, XFH **JOHN DEERE:** 4055 - 4255 - 4555 - 4755 - 4955 - 5210->5410 - 5215->5515 **KUBOTA:** M 6800, 8200, 9000 **LAMBORGHINI:** C 353->874/90 - Crono - Crono Target - Cross - Grimper - Plus - R483->804 - Sprint **LANDINI:** Alpine - Atlantis - Atlas - Discovery - Ghibli - Globus - Mythos - Powerfarm - Rex - Trekker - Vision **LEXUS:** LS 400 I V8 **MAZDA:** 626 2.5 I V6, 2.0 D - 6 Atenza 2.0 CDVI - MPV 2.0 CDVI **MC CORMICK:** C 50->80 - CX 70->100 - CX 75, 85, 95, 105 - CMAX 60->105 - F60\_4->100\_4 - MC 80->100 **MITSUBISHI:** Pajero 2.5 TDI, 3.2 TDI - Outlander 2.4 Mivec - Grandis 2.0 DI-D **NEW HOLLAND:** T 4020->4050 - TF 4030->4050 - TNFA 75->95 - TNVA 60->95 **NISSAN:** Patrol GR III 2.8, 3.0 DDTI - Sunny III 2.0 SLXD **ASQUALI:** Cronos - Ergo - Mars **SAME:** Argon (Classic) - Aster - Aurora - Centurium - Explorer 70c->90c - Frutteto - Rock - Solar **TOYOTA:** Previa 2.0 D-4D **VALPADANA:** 4570, 4580, 4590 - Climber - Frutteto - Multitrac

<b>G28X 100</b>	100	720	1	1	B01		
-----------------	-----	-----	---	---	-----	--	--

**GOLDONI:** Serie Euro (93->) - Serie Transcar (->97) **HYUNDAI:** H 200 D KIA: Carnival 2.9 TD - Pregio - Sorento 2.5 D - Sportage 2.0 TDI **KUBOTA:** M 4000, 4050, 4500 **MITSUBISHI:** Pajero III 3.5 I GDI V6 24V 2.5 TDI - L200 2.5 D - Lancer 2.0 D - Space Gear 2.5 TDI **NISSAN:** Terrano II 2.7 TDI (4x4) - Trade **TOYOTA:** Land Cruiser 3.0 TDI D

<b>CB 110</b>	110	850	1	0	B00		
---------------	-----	-----	---	---	-----	--	--

**CASE IH:** JX75->95 - JXU70->100 - MXU100->125 **CLAAS:** Ares 546->566, 547->657 - Celtis 426->456 **IVECO:** Daily2000 (->'06) - Eurocargo Tector 65E13- >120E18 **MASSEY FERGUSON:** MF 135, 185, 265, 410, 510, 620, 1020, 1505, 2205, 2720, 4200, 4435->4455 - 8250 **MC CORMICK:** GTX 150->185 **NEW HOLLAND:** TDD75->95 - TSA 110->135 **NISSAN:** Cabstar ('07->) 28.11, 32.11, 35.11, 35.13, 35.15, 45.13, 45.15 **RENAULT TRUCKS:** Mascot ('07->) 120.50->120.65, 160.55->160.65 - Maxity 150.35, 150.45 **VOLVO:** FL 6

<b>CB 110 B01</b>	110	850	1	0	B01		
-------------------	-----	-----	---	---	-----	--	--

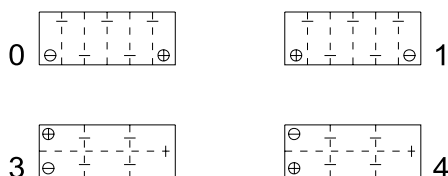
**IVECO:** Daily ('07->) 35C, 35S, 60C, 65C - Eurocargo ('07->) 65 E16, 75 E16 (E18), 80 E22, 90 E22, 100 E18



Tipo	Ah	A EN	Tipo polo	Polarità	Fissaggio alla base	Schema	Dimensioni
<b>CH 125</b> 625 103 076	125	760	1	0	B00		
<b>ALLIS CHARMERS:</b> TL 12, 16, 645 <b>ATLAS COPCO:</b> XA 60, 80 - XAS 60, 80 <b>BEDFORD:</b> TL 1000, 1500, 1600 - TM 3650, 3800, 4400 <b>DAF:</b> CF 65 - LF 45 - LF 55 <b>FORD:</b> Cargo-serie (->'80) - Transcontinental serie <b>LEYLAND:</b> Chieftain - Cruiser - Marathon - Mastif - Supermastif <b>MASSEY FERGUSON:</b> MF 174C, 274C, 393, 665, 845, 1100, 1550, 2135C							

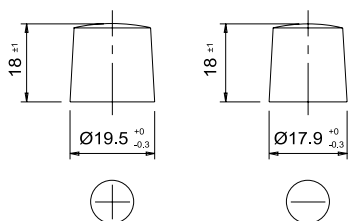
## POLARITÀ

### 12 Volt

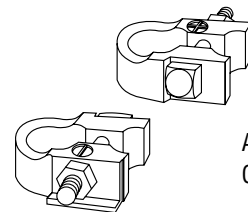
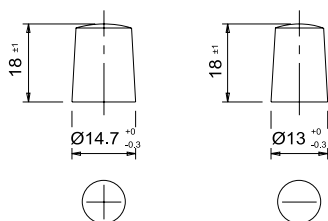


## TIPO POLO

### TERMINAL 1

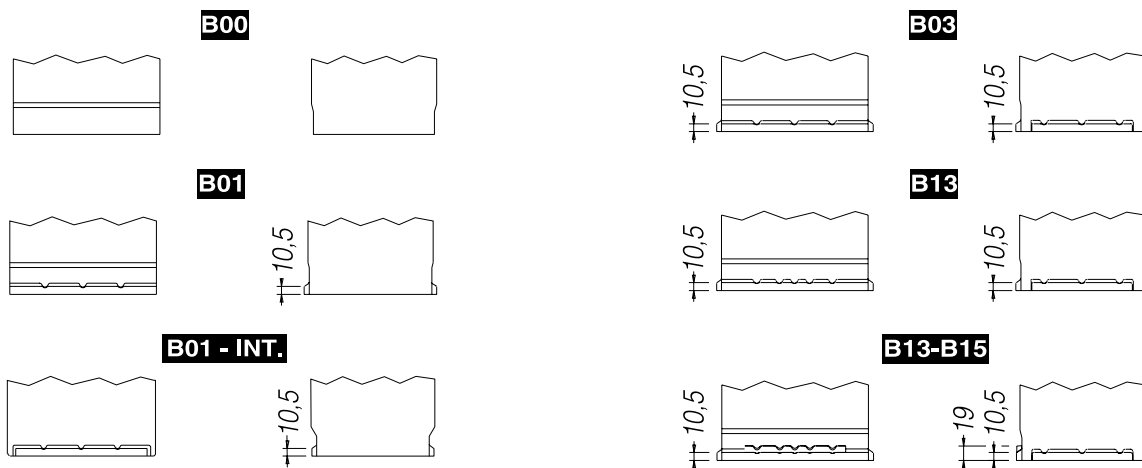


### TERMINAL 3



Adattatore Ford  
Codice **395001**

## FISSAGGI ALLA BASE



## CLAUSOLA DI NON RESPONSABILITÀ

Le tipologie di prodotto consigliate per i veicoli, pur essendo il risultato di esperienze consolidate, costituiscono solo un nostro suggerimento tecnico. FIAMM non si assume alcuna responsabilità in merito ad eventuali applicazioni non corrette e/o aggiornate.



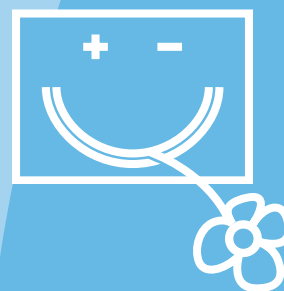
**Italian Passion  
Global Energy**

Sede Centrale  
FIAMM SpA  
Viale Europa, 63  
Montecchio Maggiore  
36075 (VI) - Italy  
Tel +39 0444 709311  
Fax +39 0444 699237  
www.fiamm.com



Batterie Avviamento Sede Operativa e Uffici Commerciali  
FIAMM SpA  
viale del Lavoro 20  
37040 Veronella (VR) Italy  
Tel. + 39 0442 489111 - Fax. +39 0442 489162

[info.starter@fiamm.com](mailto:info.starter@fiamm.com)



[www.raccoltaamica.com](http://www.raccoltaamica.com)



- COBAT c'è -

[www.cobat.it](http://www.cobat.it)



ISO 9001:2000



ISO/TS 16949:2002

1907/2006/EC REACH COMPLIANT